



THE LORD IS MY SHEPHERD

by

Matt Johnson

www.MattJohnsonMusic.com

DOLCE

& NUIT

PRODUCTIONS



COMPOSER'S NOTES

- *This original music falls into the Contemporary Christian music genre.*
- *This particular piece is more suited as a vocal solo, with either piano or a Worship Band accompaniment.*
- *If your theme is centered around Psalm 23, this piece would work well.*
- *This music was transcribed by the composer.*

Peace,

Matt Johnson

A handwritten signature in black ink, appearing to read "Matt", with a long, sweeping flourish extending from the end of the name.

www.MattJohnsonMusic.com

Copyright © 2001 Dolce & Nuit Productions (ASCAP). Worldwide Rights Reserved.

THE LORD IS MY SHEPHERD

Psalm 23 & John 10

MATT JOHNSON
www.MattJohnsonMusic.com

♩ = 69

$E\flat 9$ $E\flat 9$ $E\flat sus9$ $E\flat 9$ $E\flat 9$ $E\flat sus9$
 G G $A\flat$ G G $A\flat$

(VAMP - repeat 3X)

The

A1

$E\flat \Delta 7$ $A\flat \Delta 7$
 G

Lord is my she - pherd; I shall not want.

5

Fm $B\flat sus7$ $B\flat 7$ $E\flat 9$ $E\flat 9$ $E\flat sus9$
 G G $A\flat$

(VAMP)

He makes me lie down in green pas - - - tures:

7

$E\flat 9$ $E\flat 9$ $E\flat sus9$ $E\flat \Delta 7$
 G G $A\flat$

He leads me be - side

9

$Fm 7$ $A\flat \Delta 7$ $B\flat 7$ $B\circ 7$ Cm Gm $A\flat \Delta 7$ $E\flat$
 $B\flat$ G

- the still wa - ters. He re - stores my soul:

12

$Fm 7$ $B\flat sus7$ $B\flat 7$ $E\flat 9$ $E\flat 9$ $E\flat sus9$ $E\flat 9$ $E\flat 9$ $E\flat sus9$
 G G $A\flat$ G G $A\flat$

He re - stores my soul.

B



E \flat

F m



1. Sure - ly good - ness and _____ mer - cy shall fol - low me; _____
2.3. Je - sus came _____ that we _____ may have _____ life and live it full; _____

17 **B \flat 7**

B $^{\circ}$ 9

C m

G sus G



Sure - ly good - ness and _____ mer - cy shall fol - low me. _____
Je - sus came _____ that we _____ may have _____ life and live it full. _____

19 **E \flat**

F m



Sure - ly good - ness and _____ mer - cy shall fol - low me _____
Je - sus came _____ that we _____ may have _____ life and live it full _____

21 **A \flat Δ 7**

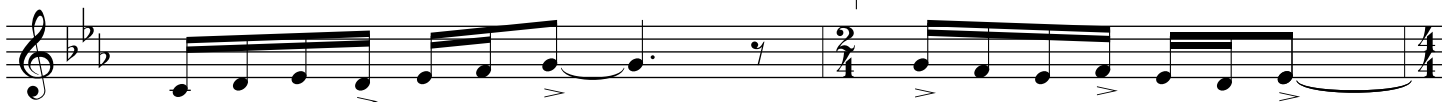
B \flat 7

C m

1.

A \flat Δ 7

B \flat 7



all of the days of my life, _____ all of the days of my life. _____
all of the days of our lives, _____

23

E \flat 9
G

E \flat 9
G

E \flat sus9
A \flat

E \flat 9
G

E \flat 9
G

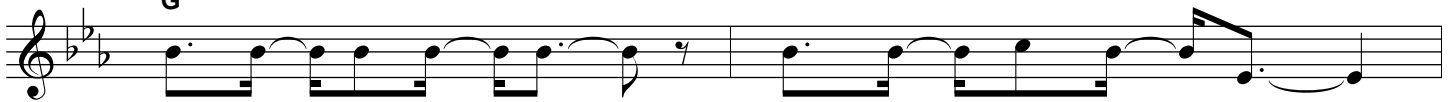
E \flat sus9
A \flat



A2

E \flat 9
G

A \flat Δ 7



God of _____ all pow - er _____ sent the _____ Great Shep - herd _____

27

F m

A \flat Δ 7
B \flat

E \flat 9
G
(VAMP)

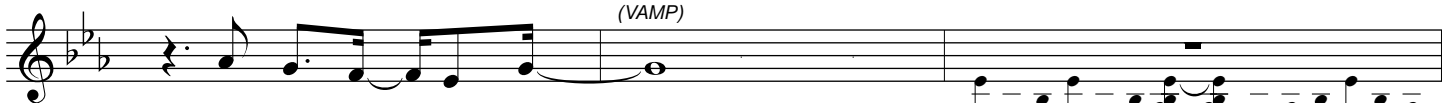
E \flat 9
G

E \flat sus9
A \flat

E \flat 9
G

E \flat 9
G

E \flat sus9
A \flat



to care for _____ His Sheep. _____

30 $E\flat_9$
 G $A\flat\Delta 7$

We know His voice and answer His call.

32 $Fm 7$ $B\flat 7$ $B^\circ 7$ Cm Gm $B\flat$ $A\flat\Delta 7$ $E\flat_2$
 G

We know His name,

34 $Fm 7$ $A\flat\Delta 7$ $B\flat 7$ $E\flat_9$ $E\flat_9$ $E\flat sus 9$ $E\flat_9$ $E\flat_9$ $E\flat sus 9$
 G G $A\flat$ G G $A\flat$
(VAMP) (VAMP)

we know His name. God

C $c\flat$ $D\flat 7$
 $C\flat$

sends us as shepherds to rescue the lost; To

39 $B\flat m 7$ $E\flat m$

heal all the injured no matter the cost. To

41 $C\flat$ $D\flat 2$ $B\flat m 7$ $G\flat 2$ $E\flat m 7$ E
 $C\flat$ $D\flat$ A

feed one another with knowledge and understand

43 $G\flat$ **D.S.**

ing, through the Son.

45 **2.** $A\flat\Delta 7$ $B\flat 7$ $E\flat 9$ $E\flat 9$ $E\flat sus 9$ $B\flat 7$ **D.S.**
 G G $A\flat$

all of the days of our lives.

47 **3.** $A\flat\Delta 7$ $B\flat 7$ Cm $A\flat\Delta 7$ $B\flat 7$ $Cm 7$

all of the days of our lives. — Je - sus Christ — is Lord —

49 $A\flat\Delta 7$ $B\flat 7$ $E\flat 9$ $E\flat 9$ $E\flat sus 9$

now — and for - e - ver more. —

51 $E\flat 9$ $E\flat 9$ $E\flat sus 9$ $E\flat 9$ $E\flat 9$ $E\flat sus 9$ $E\flat$

Ritard.